

Installation Manual  
P/N 07510-MF-TVH



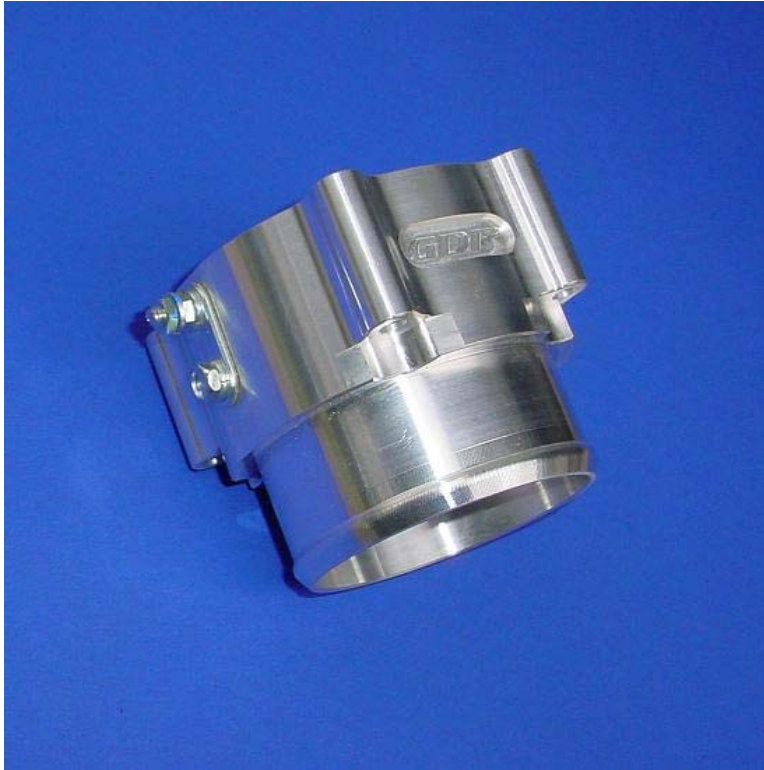
2007.5-2010 DODGE CUMMINS  
**Mega-Flo TVM Grid Heater**

Installation Instructions

P/N 07510-MF-TVH  
Mega-Flo Throttle Valve Mounted Grid Heater

**PLEASE READ ALL INSTRUCTIONS BEFORE BEGINNING INSTALLATION**

## Mega-Flo Grid Heater Kit Contents



<u>Qty</u>	<u>Item Description</u>
1	Mega-Flo TVM Grid Heater
1	Mounting Gasket

Please check your parts inventory against the above parts list before beginning your installation.

Installation of the Mega-Flo TVM Grid Heater is accomplished by replacing the stock throttle valve with the Mega-Flo and moving the stock grid heater power wire from the factory location to the new heater stud. Yes, it's as simple as that!

**IMPORTANT NOTE!!!** Grounding is critical to the proper function of the Mega-Flo Grid Heater. If your intake manifold is painted or powder-coated you must ensure proper grounding to the engine. Make sure that the paint or coating is removed from underneath at least one intake manifold to cylinder head mounting bolt for proper ground connection. **Failure to do this will result in an inoperable or weak heater.**

You may find installation of the heater to be easier with the intake manifold removed from the truck. This is left up to the installer to decide.

1. Loosen the intercooler boot clamp at the intake manifold. Work this boot off of the throttle valve connection point.
2. Unplug the throttle valve electrical connector.
3. Remove the 4 mounting bolts from the stock throttle valve and remove the throttle valve from the end of the intake manifold.
4. Clean the gasket surface at the intake manifold connection point.
5. Using the 4 factory mounting bolts and the new gasket, install the Mega-Flo TVM Grid Heater onto the intake manifold and tighten.

Depending on your current configuration you may need to reinstall/reconnect the stock grid heater power wire if already deleted. The stock power wire must be functional. If you are installing an Air-Boss 67 grid heater delete plate at this time you will simple move the power wire from the stock stud location on the plenum to the new stud on the back of the Mega-Flo TVM Grid Heater.

6. Connect the factory grid heater power wire to the stud on the back of the Mega-Flo Grid Heater.
7. Carefully tighten this electrical connection. Take care not to over tighten this connection. Stud damage will occur if over tightened.

Installation complete! The new Mega-Flo TVM Grid Heater will now function just as the stock heater did without the power robbing restriction to airflow.

Glacier Diesel Power, Inc.  
glacierdieselpower.com  
509-993-4923

**GLACIER DIESEL POWER**  
**DISCLAIMER OF LIABILITY**

Other than as expressly set forth herein, Glacier Diesel Power (hereafter collectively, "SELLER") shall in no way be responsible for the PRODUCT'S proper use and service. In no event shall SELLER be liable for any special, incidental, indirect or consequential damages of any kind or nature, whether or not BUYER was advised of the possibility of damage, arising or resulting from the use or performance of the PRODUCT, and BUYER hereby waives any and all such claims.

BUYER acknowledges that he/she/it is not relying on SELLER'S skill or judgment to select or furnish goods suitable for any particular purpose and that SELLER has no liability that will extend beyond the scope of the limited warranty contained herein, and BUYER hereby waives all remedies or liabilities, expressed or implied, arising by operation of law or otherwise, (including, without limitation, any obligations of SELLER with respect to fitness for any particular purpose; merchantability; and special, incidental, indirect or consequential damages) or whether or not occasioned by SELLER'S negligence.

SELLER disclaims any warranty and expressly disclaims any liability for personal injury or damages related to BUYER'S use of the PRODUCT. BUYER acknowledges and agrees that the disclaimer of any liability for personal injury is a material term for this agreement and BUYER agrees to indemnify SELLER and hold SELLER harmless from any claim related to the PRODUCT and its use or performance. Under no circumstances will SELLER be liable for any damages, liabilities, costs or expenses incurred as a result of or by reason of the use, performance or sale of the PRODUCT, including, without limitation, any damages, liabilities, costs or expenses incurred by reason of BUYER'S negligence related to those uses of the PRODUCT.

SELLER assumes no liability regarding the improper installation or misapplication of the PRODUCT. It is the installer's responsibility to check for proper installation, and, if in doubt, contact the manufacturer.

**LIMITATION OF WARRANTY**

SELLER hereby provides the following limited warranty as to description, quality, merchantability, fitness for any product's purpose, productiveness, or any other matter of SELLER'S product sold herewith. The SELLER shall be in no way responsible for the product's open use and service and the BUYER hereby waives all rights other than those expressly written herein. This Warranty shall not be extended or varied except by a written instrument signed by SELLER and BUYER.

The Warranty is Limited to one (1) year from the date of sale and limited solely to the parts contained within the product's kit. All products that are in question of Warranty must be returned shipping prepaid to the SELLER and must be accompanied by a dated proof of purchase receipt. All Warranty claims are subject to approval by Glacier Diesel Power.

Under no circumstances shall the SELLER be liable for any labor charged or travel time incurred in diagnosis for defects, removal, or reinstallation of this product, or any other contingent expenses.

Under no circumstances will the SELLER be liable for any damage or expenses insured by reason of the use or sale of any such equipment.

IN THE EVENT THAT THE BUYER DOES NOT AGREE WITH THIS AGREEMENT: THE BUYER MAY PROMPTLY RETURN THIS PRODUCT, IN A NEW AND UNUSED CONDITION, WITH A DATED PROOF OF PURCHASE, TO THE PLACE OF PURCHASE WITHIN THIRTY (30) DAYS FROM DATE OF PURCHASE FOR A FULL REFUND. THE INSTALLATION OF THIS PRODUCT INDICATES THAT THE BUYER HAS READ AND UNDERSTANDS THIS AGREEMENT AND ACCEPTS ITS TERMS AND CONDITIONS.